



CM75QT

The most common problem in hose production is incorrect cutting length. Finn-Power CM75QT has been designed to solve that problem. CM75QT eliminates human mistakes.

CM75QT quality table has been equipped with automatic servo motor based measuring device with extreme accuracy.

Fast measuring reduces the cutting cycle time dramatically and enables fast return on investment.

CM75QT is equipped with ICC-control which enables connectivity and job queues.

CM75QT also available as SAFE-model.

TECHNICAL DATA

Max. hose size (inch)	2
Diameter (blade) external	520x4
Diameter (blade) internal	38
Max. hose OD	71
Motor Power (kW/HP)	7.5 / 10.0
Velocity, 50Hz	2840
Velocity, 60Hz	2840

DIMENSIONS (LxWxH)

mm	990x714x1318
inch	39.0x28.2x51.9

WEIGHT

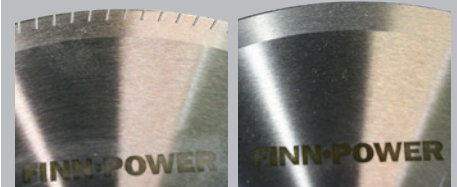
kg/lbs	300/485
--------	---------

STANDARD FEATURES

ICC-control
Toothed blade
Adjustable pneumatic pusher speed
Adjustable hose support
Measuring table (6 metre)

OPTIONS

Measuring table (2 m segments)
Fume extractor
Smooth blade
Safeguard
Motor brake



Toothed blade as a standard feature.

Smooth blade as an option.

FURTHER INFO ON PRODUCTS,
PLEASE REVERT TO SPECIFIC PRODUCT CARD